



BK BIRLA CENTRE FOR EDUCATION

SARALA BIRLA GROUP OF SCHOOLS
SENIOR SECONDARY CO-ED DAY CUM BOYS' RESIDENTIAL
SCHOOL

PRE-MIDTERM (2024-25)



SCIENCE - MARKING SCHEME

Class: VIII

Duration: 1 Hr

General Instructions:

Date: 02/08/'24

Max. Marks: 25

- This question paper consists of 12 questions in 3 sections.
- Section A consists of 3 objective type questions carrying 1 mark each.
- Section B consists of 5 Very Short questions carrying 02 marks each.
- Section C consists of 4 Short Answer type questions carrying 03 marks each.

SECTION-A

Select and write the most appropriate option out of the four options given for each of the questions 1 - 3.

- (a) Petroleum gas 1
- 1 bar is equal to :
(a) 10^5 Pa 1
- (a) If both assertion and reason are correct and reason is correct explanation of the assertion. 1

SECTION B

Question No. 4 to 8 are very short answer questions

- Peat, Lignite, Bituminous and Anthracite. $(\frac{1}{2} + \frac{1}{2} + \frac{1}{2} + \frac{1}{2})2$
- Compounds made up of hydrogen and carbon. Asphalt and fuel oil. (1+1) 2
- $P = F/A$
 $F = 200N$, $A = 100/10000 \text{ m}^2$
 $P = 200/1/100 = 20000 \text{ pa}$ 1+1
7.
Water from the topmost hole comes out with the least force and falls at the point that is at the minimum distance from the bottle. Reason: This activity confirms that the pressure in a liquid varies with the depth & increases with depth. 1+1

8. 1. Algae are Simple plant –like organisms that do not have root, stem or leaves. ½ x 4=2
2. They have cell wall and chlorophyll like plant cells.
3. They are autotrophic prepare food by photosynthesis
4. They may be unicellular or multicellular .They grow in moist areas.
5. Examples are Spirogyra, volvox, chlamydomonas.

SECTION C

Question No. 9 to 12 are short answer questions

9. (a) Coke , Coal tar, Ammonical liquor and coal gas. 1
- (b) Use LED bulbs be energy efficient, Use renewable energy such as wind and solar, Reduce the use of plastics, Opt for active travel options etc 2
10. The height of Mercury column in the narrow glass tube is 76 cm is called one atmosphere.
- A barometer consists of a glass tube which has one end open and the other end is sealed. The tube is filled with mercury. The open end is then inverted and it is then placed into an open reservoir of mercury. Because of the presence of vacuum in the tube, the tube will not get completely empty and some amount of mercury will be there. Therefore, the pressure inside the tube gets balanced with the atmospheric pressure outside the tube. 1+2

11. How are microorganisms useful to us and in what way are they harmful to us ? ½ x 6=3

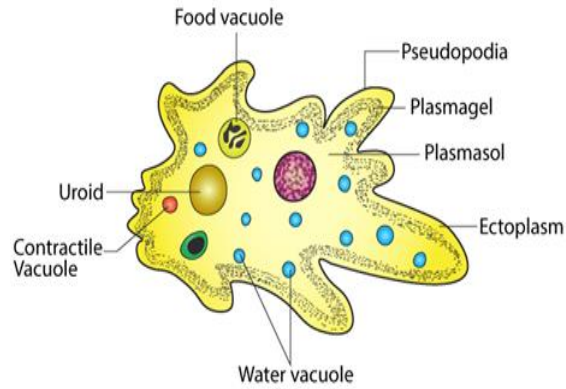
| | Uses | Harmful effects |
|---|------------------------------------|---------------------------------------|
| 1 | Making curd | Causes diseases in animals and plants |
| 2 | Yeast is useful in Bakery industry | Spoils food |
| 3 | In making vaccines | Causes diseases in human beings |
| 4 | Lactobacillus, yeast, | Salmonella ,fungus, viruses |

12. (a) Draw diagram of amoeba and label the parts.

1+($\frac{1}{2} \times 4$)=3

STRUCTURE OF AMOEBIA

BYJU'S
The Learning App



ANS

(b) What changes do you observe when a piece of bread is made wet by spraying water on it and kept in a warm place for a few days? Which microbe grows on it?

Ans b) After few days white cottony structure starts growing on it ,which degrades bread. The organism is Fungus(Bread mould).

1

**** Best of luck****